

RAIL CONTAINMENT

PELLET PAL - PELLET SPILL TRAY



PART NUMBER	DIMENSIONS LxWxH FT. [M.]	WEIGHT LB. [KG.]
5755-YE-RRPW	2 x 4 x 3 in. [0.6 x 1.2 x 762 cm.]	11 [4.9]
5760-YE-RRPW	4 x 4 x 3 in. [1.2 x 1.2 x 762 cm.]	17 [7.7]

Regulations: Operation Clean Sweep

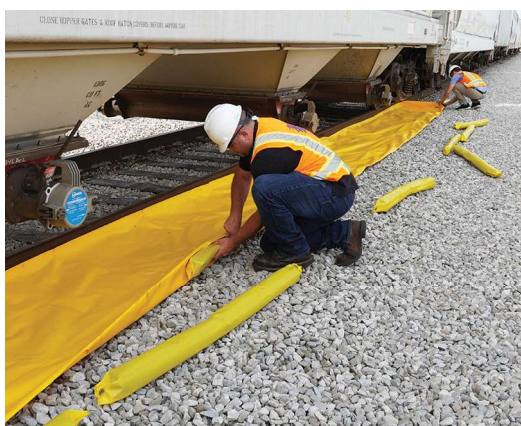
RAILCAR TRACK PAN PELLET BERM



PART NUMBER	TYPE	DIMENSIONS LxWxH IN. [CM.]	WEIGHT LB. [KG.]
49-3020-YE-RRCP	Outrigger	20 ft. x 30 x 4 [6.1 m. x 76.2 x 10.1]	40 [18]
49-5620-YE-RRCP	Center	20 ft. x 56 x 4 [6.1 m. x 142.2 x 10.1]	33 [15]
49-3060-YE-RRCP	Outrigger	60 ft. x 30 x 4 [18.3 m. x 76.2 x 10.1]	90 [41]
49-5660-YE-RRCP	Center	60 ft. x 56 x 4 [18.3 m. x 142.2 x 10.1]	93 [43]

Regulations: Operation Clean Sweep

RAILCAR TRACK PAN SPILL BERM



PART NUMBER	TYPE	DIMENSIONS LxWxH IN. [CM.]	WEIGHT LB. [KG.]	SPILL CAPACITY* GAL. [L.]
49-3020-YE-RRD	Outrigger	20 ft. x 30 x 4 [6.1 m. x 76.2 x 10.1]	40 [18]	124 [472]
49-5620-YE-RRD	Center	20 ft. x 56 x 4 [6.1 m. x 142.2 x 10.1]	55 [24]	232 [878]
49-3060-YE-RRD	Outrigger	60 ft. x 30 x 4 [18.3 m. x 76.2 x 10.1]	55 [24]	374 [1,415]
49-5660-YE-RRD	Center	60 ft. x 56 x 4 [18.3 m. x 142.2 x 10.1]	62 [28]	698 [2,642]

Regulations: Operation Clean Sweep

*The berm spill capacity is based on dimensions, low flow rate, a level surface and no displaced volume.